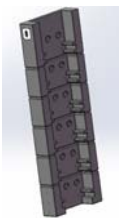


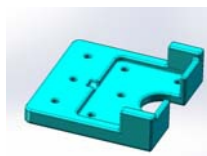
INSTRUCTION MANUAL

WALL CHARGER 3 LAYER

1. Open the Carton box, and take the product out.

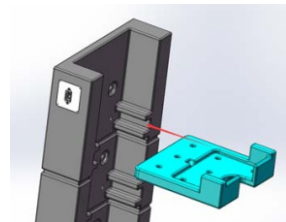


main body

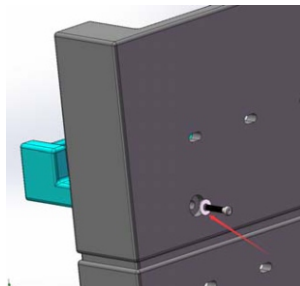


charger holder

2. insert the charger holder into the slot of the main Body



3. Use allen key to lock the charger holder



Screws: M8x30 washer M8 (22X8.5X2)
Tool: allen key

4. repeat steps and install all charger holder on main body

5. lock the products on wall or other bracket.

Screws: M8x60 washer M8 (22X8.5X2)
Tool: allen key

